

PRINTIC V2.0 TICKETING SOFTWARE

Print your own raffle tickets, vouchers, promos and more!

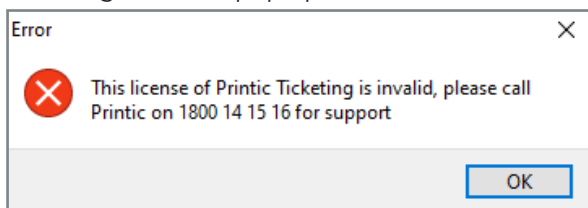
QUICK START GUIDE INSTALLING, LICENSING & STARTING OUT

INSTALLING THE SOFTWARE

1. Open **printic2.0_diy_ticketing_software.exe**.
*If you see a screen saying Windows Defender has blocked the program, click **More Info** then **Run Anyway**.*
2. Select your installation folder (the default folder of **C:\PrinticTicketing** is recommended) and click **Next**.
3. Click **Next** again. If you want the Printic icon on your desktop, tick the checkbox and click **Next** again, then click **Install**.
4. To get started, tick **Launch Printic Ticketing**, click **Finish**, then see **Licensing** section below.

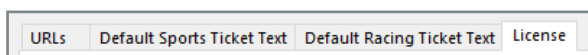
LICENSING THE SOFTWARE

1. On first launch of Printic Ticketing software, the following error will pop up:



Click **OK**.

2. On the top menu, click **Edit > Preferences**.
3. Select the **License** tab.



You will need the **User ID** number on this screen in order to create your license key.

4. Call **Printic** on **1800 14 15 16** (Mon-Fri between 8:30am-5:00pm) and provide the **User ID** number from the software.
We will issue you either a **30 Day Free Trial Key**, or a **1 Year Paid License**.
5. In the Printic Ticketing software, click **Edit > Preferences**.
6. Select the **License** tab, and enter your supplied license key in the **License** section, then click **Validate**.
7. **Congratulations!** You are now ready to start using Printic Ticketing software to create raffle tickets, vouchers, promos and more!

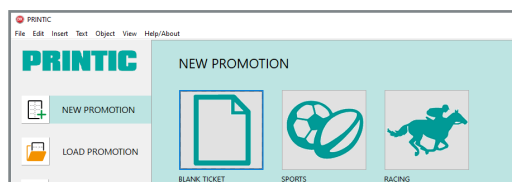


Experiencing issues with installing, licensing or using Printic Ticketing software?

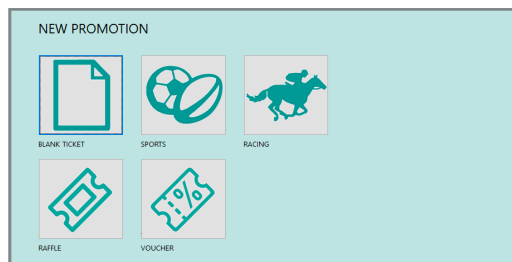
Call our friendly staff on 1800 14 15 16 (Mon-Fri 8:30am-5:00pm) and we will be happy to help!

STARTING A NEW PROMOTION

1. Click **New Promotion**.



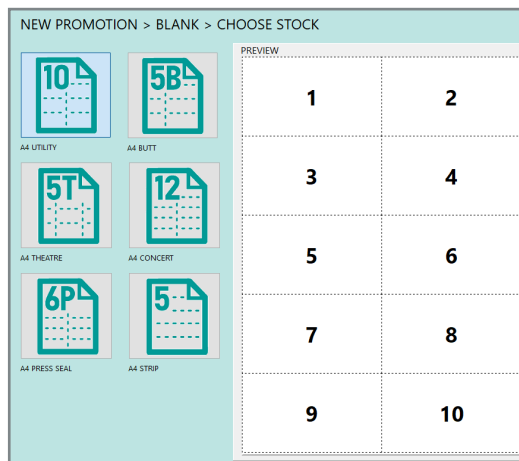
2. Select your promotion type from the icons on the right and click **Next** (or double-click icon).
If you are unsure which promotion or paper stock you want to use, choose **Blank Ticket**.



Choose your paper stock.

If you have already ordered Printic paper stock, choose the matching icon. If you are printing on plain paper, choose whichever option best fits your promotion. Click **Next** (or double-click icon).

Sports and racing promotions such as Footy Doubles or Racing Sweeps should only be printed on Printic press seal stock (6P).



3. You should now be able to view the design window, where you can place text, images, data fields and more. See our **Quick Start Guide - Tools & Design Overview** for further info.

PRINTIC

FOR ALL YOUR EVENT PROMOS AND CLUB SUPPLIES

PRINTIC.COM.AU 1800 14 15 16

100% AUSTRALIAN OWNED AND OPERATED